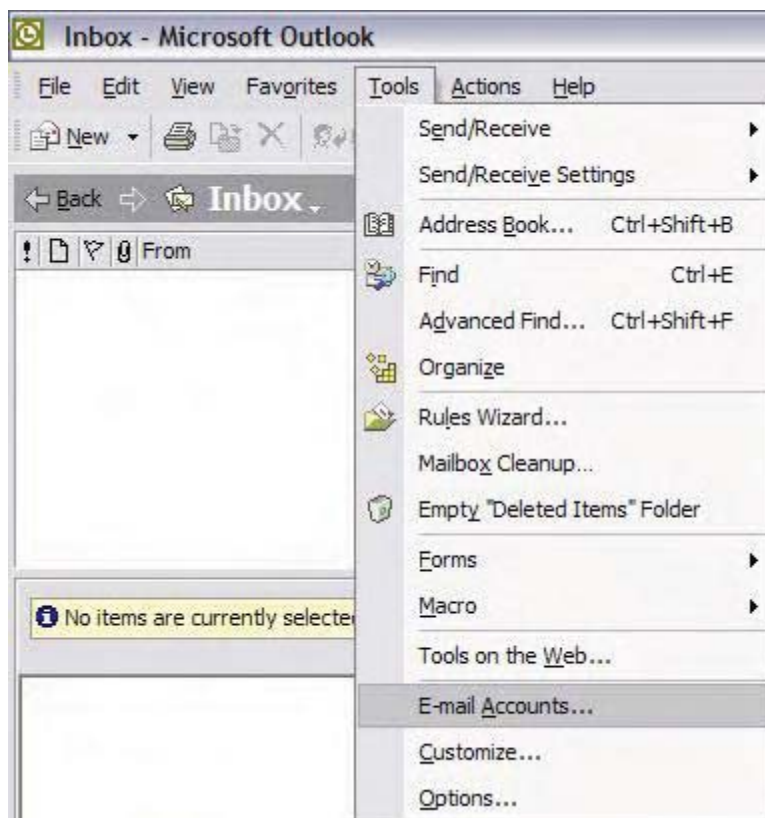




The following page is designed to help you add your new **WBCable** email address to **Outlook XP**.

Start **Outlook XP**. Most computers will have a desktop icon and also a small icon in the task bar at the bottom of the desktop near the **"Start"** button. Either icon can be used to start the program. If you cannot find such an icon, click your **"Start"** menu then choose **"Programs"** and look for **Outlook**.

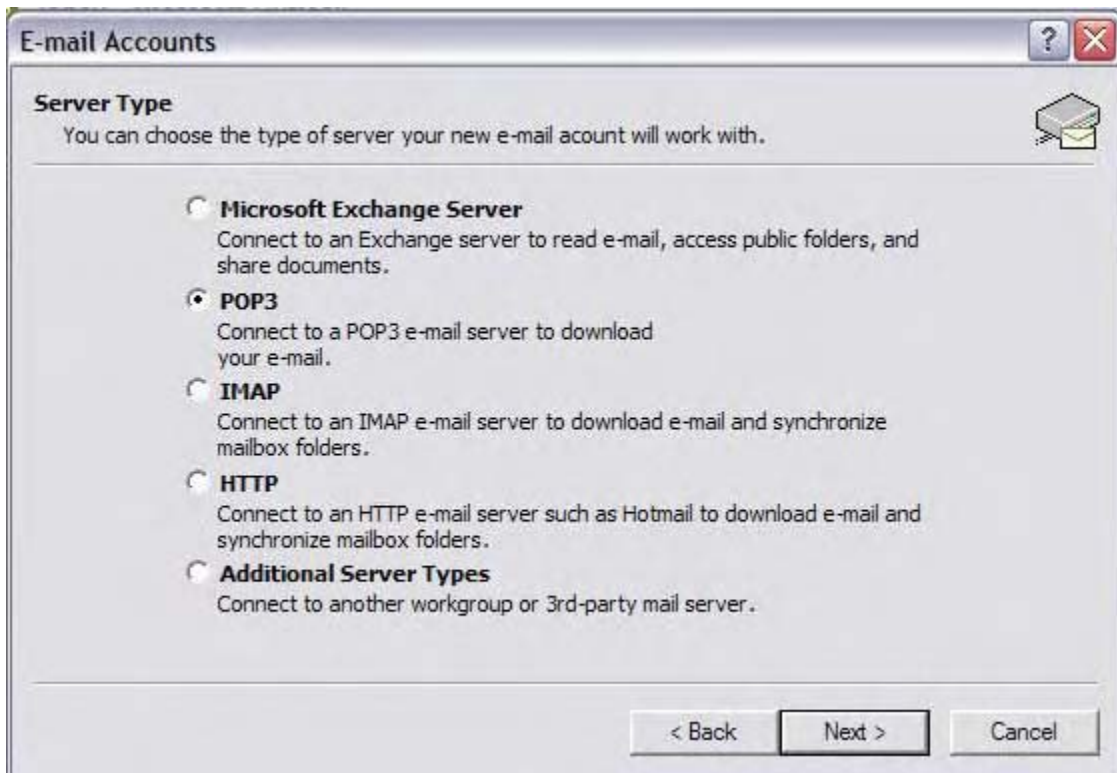
Click the Tools menu at the top of the **Outlook** Window, then click **"Email Accounts"**.



On this new window, select the first option "**Add a new e-mail account**" and click "**Next**".



On the "**Server Type**" screen, choose **POP3**. Click "**Next**".



You should now be on the **"E-mail Accounts"** screen. Under **"User Information"**, enter your name as you would like for it to appear in the *From* line on outbound mail, then enter your email address.

In the **"Server Information"** section, type **mail.wbcable.net** in the **"Incoming mail server"** line. Next, type **mail.wbcable.net** in the **"Outgoing mail server"** line.

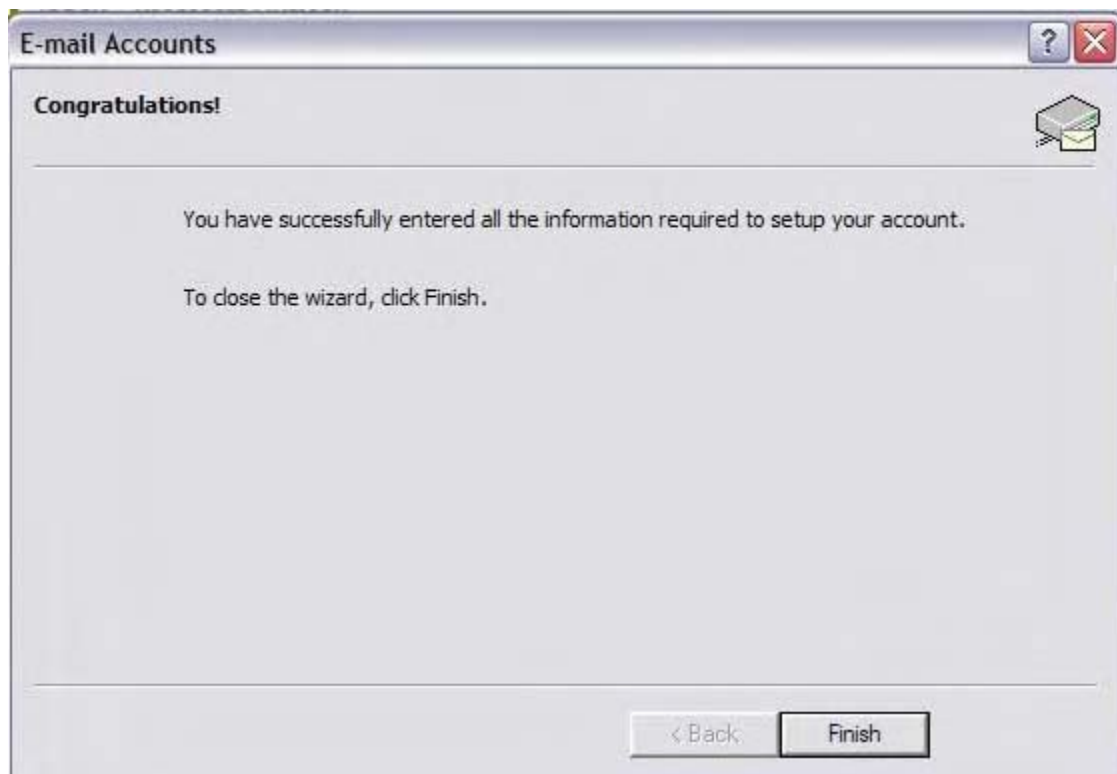
In the **"Logon Information"** section, enter your username (the part of your email address to the left of the '@' symbol) then enter your password. Be sure to check the box labeled **"Remember Password"**. Your settings should look like the image. Click **"Next"**.



The screenshot shows the 'E-mail Accounts' dialog box with the following fields and options:

- Internet E-mail Settings (POP3)**: Each of these settings are required to get your e-mail account working.
- User Information**:
 - Your Name: Customer's name
 - E-mail Address: username@wbcable.net
- Server Information**:
 - Incoming mail server (POP3): mail.wbcable.net
 - Outgoing mail server (SMTP): mail.wbcable.net
- Logon Information**:
 - User Name: username
 - Password: [masked]
 - Remember password
 - Log on using Secure Password Authentication (SPA)
- Test Settings**:
 - After filling out the information on this screen, we recommend you test your account by clicking the button below. (Requires network connection)
 - Test Account Settings ...
 - More Settings ...
- Navigation buttons: < Back, Next >, Cancel

Click **"Finish"** on the **"Congratulations!"** screen.



Congratulations! You are now ready to send and receive email.